

Ealing Cycling News

The LCC newsletter for Acton, Ealing, Greenford, Hanwell, Northolt, Perivale and Southall
March 2014

Czar hopes for Revolution.



Elly Castellano (ECC Chair), Andrew Gilligan (London's Cycling Commissioner), and Nick Manthorpe (ECC Borough Coordinator) at our February meeting.

Andrew Gilligan, London's Cycling Commissioner, popularly known as Boris Johnson's 'Cycling Czar' gave a brief talk and answered questions at our February meeting. Gilligan, a journalist who launched the Evening Standard's Safer Cycling campaign in 2007, works three days a week at City Hall overseeing TfL's cycling policy and programmes.

In his talk, Gilligan explained that a lot of work on the Mayor's Vision, (the Superhighways, the Quietways, major junction improvements & action on heavy lorries), has been happening behind the scenes over the last eleven months. The old programme of plans has been enlarged. Designs for junctions and Superhighways have been remade and to ensure this is done to a high standard 28 additional staff, with the skills needed for designing cycling infrastructure, have been taken on - some from abroad. He is also working on getting the political consent to make these schemes happen. Many of the roads are owned by the boroughs, land owners, trusts and other bodies so he has been speaking to all these stakeholders to get their agreement for these schemes.

By 2016 we will see all the superhighways upgraded. The one that will run from Ealing will be the West-East Superhighway which will link up Ealing town centre and Acton town centre via 'quiet-ways', then travel east to Park Royal, and run segregated along the A40 flyover, then down Westbourne Terrace, through Hyde Park Corner, to Vic-

toria Embankment and then join the existing superhighway. The section on the flyover will be covered, and have a sound-insulating barrier between it and motor vehicles. For Ealing cyclists this should provide a route into London that will be quicker than the tube!

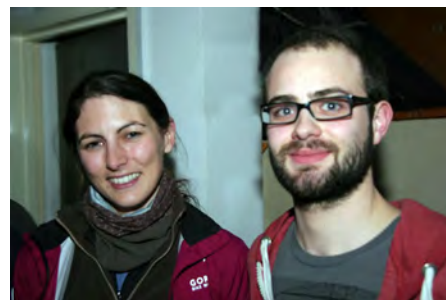
Answering a question on cycle training for children, Gilligan explained that despite a lot of money being spent on training, its not currently overcoming parents' fears that it is unsafe. The current training comes in three levels Bikeability 1, 2 & 3 and he feels that not enough is being delivered at levels 2 and 3. He would like to get the parents involved as the kids are already very keen.

Another questioner asked why so few women cycle in London and what he would do to get more women cycling. Gilligan said that he is keen to get more older people, and women cycling, and hopes that the better junctions, and Quietways will particularly appeal to these groups.

Asked if all advisory cycle lanes could be made mandatory, Gilligan said that he would like to do more of that, but often the decision came down to being fair to all users. Some shops rely on the ability of people to stop, and park. But sometimes alternative parking bays can be provided.

Gilligan stressed that just because you have heard a TfL scheme has been announced it will not just happen, it needs support at the consultation stages and it is necessary for the cyclists' voice to be heard and keep the pressure up on other stakeholders.

SPACE FOR CYCLING



Amy Summers, LCC's Activism Coordinator, and Jordan Walker, ECC's Space for Cycling coordinator.

You're probably aware that LCC is campaigning for safe space for cycling on every street across London. As part of this campaign they have asked us to come up with suggestions for a specific improvement in every ward in the borough. A number of you have responded online, and others have volunteered to help. Jordan Walker, an Ealing LCC member, is collating these responses and compiling our list of 'ward asks'. He writes:

"The group has decided to support the 'Protected Space for Cycling' theme throughout Ealing. During this campaign we are trying to influence the three main parties to support Space for Cycling, and it was decided that it would be easier for the Councillors to win support from their parties if we approached them with one key message, rather than a number of different policy headlines. One of the main advantages of this title is that it is quite flexible, for example it could be quite easy to argue that a 20mph zone creates a protected space for cycling by virtue of the fact that the traffic is moving more slowly and therefore poses less of a threat. Similarly arguing for physical segregation for cyclists on main roads also falls nicely under the banner of 'Protected Space for Cycling'."



Martin Gorst

Council News

A lot of pro-cycling work is happening behind the scenes at Ealing Council.

Heavy Lorries



A demonstration of the lorry warning system.

At the end of November the council launched a trial of new lorry safety technology. The Cycle Safety Shield System detects cyclists and pedestrians 360 degrees around the vehicle, while filtering out inanimate objects such as traffic bollards and lampposts. The position of cyclists can be displayed on a monitor in the cab, and an alarm sounds if a cyclist or pedestrian comes too close to the vehicle. The council has fitted the system to a highway repairs lorry, and will test it over a six month period.

Mini Holland Bid

In December the council handed in its Mini Holland bid to City Hall. Ealing Council should hear around the 2nd of March if it has been awarded funding. Ealing was one of eight outer London boroughs shortlisted for the Mayor's "Dinky Dutch" dosh. Ealing Cycling Campaign fully supports the council's proposals, which include many of the schemes we've been campaigning on for years, such as improving access to Ealing Broadway Station, and improvements to the Uxbridge Road cycling corridor. We will publish news of the announcement on our web site as soon as we hear. The good news is that, whatever happens regarding the Mini Holland bid, there will still be funding for new cycle routes in Ealing.

New Infrastructure

In February, Nick O'Donnell, the Assistant Director of Strategic Transport, attended our monthly meeting and outlined some of the work the council is doing. There are plans for new cycling infrastructure, including work sponsored by Sustrans. The council will be taking on a new member of staff to help administer this and keep the new schemes on track.

Bike Bunkers

The council is also working on simplifying the administration when people want to get a Bike Bunker installed in their front gardens. At the moment, as we reported in 2012, you are meant to have planning permission, though this is rarely enforced. A cheaper, simpler system would be very welcome.

Rides Rides Rides...

We have two Gears Without Tears Rides coming up on Sun 16 Mar and Sun 18 May. Learn how to best use your gears to glide off from traffic lights, and cruise up hills without running out of steam half way up. Perfect to get ready for a summer of riding, even the experienced riders learn a thing or two!

And look out for news of our first Photoride, visiting the most photogenic parts of the local area by bike to take and share great pictures and photography hints and tips, coming soon.

Keep an eye on www.ealingcycling.org.uk for details, or join our facebook group at www.facebook.com/groups/ealingcycling

Paul James



Interested in renting a cargo trike? See Brentford Shop item on right.

Council Dr Bike Sessions

Saturday 8th March, 2-5pm
Acton Market (outside Morrisons on pedestrianised area)

Saturday 15 March 2014, 2-5pm
West Ealing (Melbourne Avenue next to West Ealing Library)

Saturday 22nd March, 2-5pm
Southall Park (next to tennis courts near Boyd Avenue entrance)

Thursday 27th March, 4.30-7.30pm
Haven Green (Ealing Broadway Cycle Hub)

Saturday 29th March, 2-5pm
Greenford Town Centre (corner of Oldfield Lane and Ruislip Road)

Next Meeting

We meet on the first Wednesday of the month. The next meeting is on Wednesday 5th March at 7.30pm. The following meeting is on Wednesday 2nd April at the same time. Both at our regular venue, Café Grove, 65 The Grove, W5 5LL.

Contact:

info@ealingcycling.org.uk
www.ealingcycling.org.uk



www.ealingbikehub.co.uk

Bicycle Maintenance

Bicycle maintenance classes continue this year – the first Saturday of month is when we run our basic courses and more indepth sessions covering brakes and gears. These sessions are ideal for people wanting to dip a toe into the world of bike maintenance and keep their bikes running. More advanced lessons are also delivered including a popular full weekend course taking a bike apart and rebuilding it allowing you to fully service your own bike.

Other courses cover Brompton bikes, essential bicycle touring skills and wheel building – we even ran bike yoga last year. We ran a pilot few months of evening lessons at the end of 2013 and we'll restart these soon.

To book go to: www.ealingbikehub.co.uk

Brentford shop

In the summer of 2013 we ran a pop-up shop in Southall providing bike servicing and bike sales. We've now progressed on to bricks and mortar at 188 Brentford High Street selling bikes and servicing. This has allowed us to free up some space in the workshop in Greenford. For more details click www.londonbikehub.com/brentford This is also where we run our cargo project hire scheme, a great way to try for free one of our cargo trikes, be it for business or home use.

Shop by bike voucher offer

We are collecting your experiences of shopping by bike. In exchange for filling in a feedback form you will be sent a £10 voucher, click on www.londonbikehub.com/shopping and fill in your details.

All-ability Cycling

Our maintenance classes for people with learning difficulties continue and we're offering not only training in fixing bikes but also workshop administration, customer service and more. We've some more plans this year in this direction too and with the weather improving we'll restart the all-ability cycling club using a wide range of specially adapted cycles to allow everyone to enjoy cycling.

David Eales